



JUST PRESS AND PRINT

# Junior Food

DIGITAL FLATBED FOOD PRINTER



USER MANUAL

**Thank you for using our equipment!**

For all questions, please contact us  
<https://mprint-dtg.com>

## **Attention**

*It is forbidden to use the device in dusty, damp, explosion and fire hazardous areas with faulty electrical wiring.*

*It is forbidden to connect the device to a power supply network with parameters different from the specification.*

*It is forbidden to disassemble, strike, turn over the device. Repairs should only be carried out by qualified personnel.*

*It is forbidden to insert, pour various objects and liquids not specified in this manual.*

*It is forbidden to push the table with the product without setting the height.*

*Not for children under 12 years old.*

# Specification

- Print area dimensions: 21x32 cm
- Maximum product height: 75 mm
- Number of colors: 4 colors (CMYK)
- Ink pumping: manual, automatic
- Device maintenance: not required
- Dimensions of the workplace: 42x55 cm
- Power supply: 220V 50/60Hz 50W

# Description

Junior Food is a flatbed type automatic digital printer that prints directly on the by applying liquid inks to the top surface.

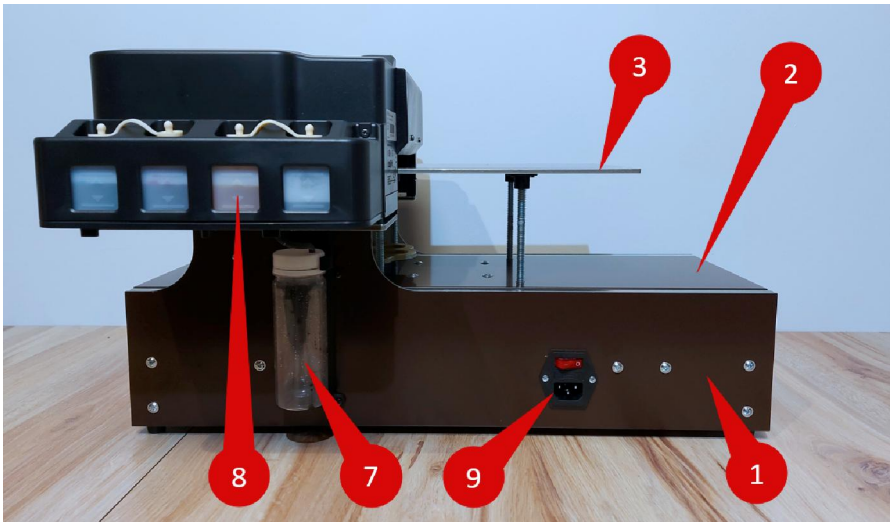
The device is ready for printing with edible inks on various confectionery products: cookies, gingerbread, cakes, pancakes, chocolate, edible paper, etc.

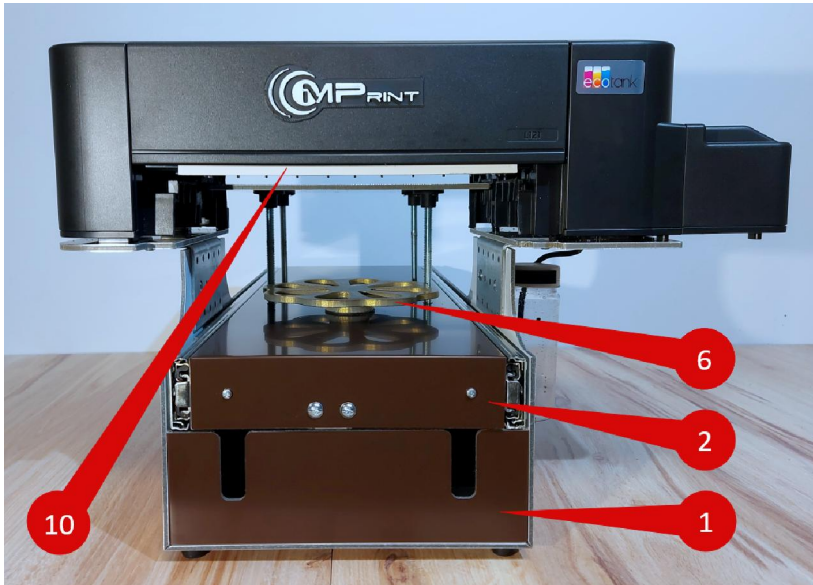
The main requirement for the product is a flat top surface. In this case, a difference in height (roughness) up to 5-7 mm is allowed.

# Control

The device consists of the following main parts:

1. Base
2. Sliding table
3. Desktop
4. Printer control panel
5. Base control panel
6. Handle for adjusting the height of the desktop
7. Waste ink bottle
8. Ink tanks
9. Power connector
10. Height limiter



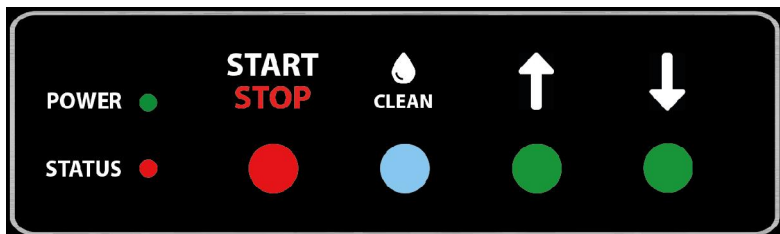


The base control panel has 4 buttons:

1. Start/Stop
2. Clean
3. Forward
4. Backward

There are 2 indicator lights:

1. Power
2. Status



After turning on the device, it is not allowed to move the table with hands, only with the buttons from the control panel. If the sliding table has been moved by hand, it must be switched off and on again to prevent damage to the device.

## First power on

After unpacking the device, check the integrity of the case and components. There should be no visible damage.

The device must be installed on a flat, horizontal surface. The device must be stable, it is not allowed to stagger or sag.

The power switch on the power connector must be in the "0" position, that is, off.

The sliding table can be pushed forward by hand slowly and without force.

The desktop must be clean and free from foreign objects.

Connect the power cord to the power socket.

Turn on the device using the switch on the power connector (position "1"). In this case, the movable table will start to move back, and the "Status" indicator will flash - the device is calibrating the movable table.

At the end of the table movement, a beep will sound, and the "Status" indicator will turn off.

The device table is ready for operation.

Since this is the first time it is turned on, it is necessary to fill the ink tanks. To do this, carefully open the containers and use syringes to fill the ink into the containers. Be careful! Avoid getting ink on your skin, clothing, or other items. The ink is hard to wash off. If ink gets on your skin, blot with a dry cloth and wash the stained area in warm soapy water.

Containers must be filled up to the maximum volume line. After that, close the containers with stoppers.

After the printer is filled with ink, it can be turned on. To do this, press the power button on the printer control panel. The printer will initialize when it is turned on and the red light will turn on. Press the print cancel button for about 2-3 seconds. The printer will begin the ink pumping procedure, thereby filling the ink supply system. This procedure may take up to 15 minutes. It is forbidden to turn off or perform any actions with the device.

At the end of pumping, the green indicator on the printer control panel will light up.

The device is ready to use.

## Operating

In use, it is very important not to exceed the maximum height of the product. The device has a physical height limiter, but if you set the desktop level incorrectly, you can damage the device. Therefore, you need to move the movable table with special attention. It is recommended to first lower the desktop below the maximum level, and set it back when moving back.

Before each use, make sure that the movable table can move freely and that there are no obstructions, and that there are no objects on the working table above the maximum height.

Also check the waste ink bottle level and seal to prevent leakage.

Switch the power switch to position "1". The unit will start calibrating the sliding table. At the end of this procedure, a signal will sound.

You can then turn on the printer with the power button on the printer control panel. The printer will start initializing. When finished, the green indicator will turn on.

Push the "Forward" button to pull out the table. Place the product on the desktop.

Press the "Back" button to push the table up to the height limiter. By turning the handle, set the height of the working table so that there is a small gap between the product and the limiter. A gap of up to 5-7mm is allowed. If the gap is larger, the image quality will deteriorate.

Press the "Start" button for about 1 second, the sliding table will start to move backward, the "Status" indicator flashes quickly. At the end of the movement of the table, a signal will sound and "Status" will be constantly lit.

Prepare the image on your computer and send it to print. When printing starts, a short beep will sound and printing will begin, the Status indicator will begin to blink slowly.



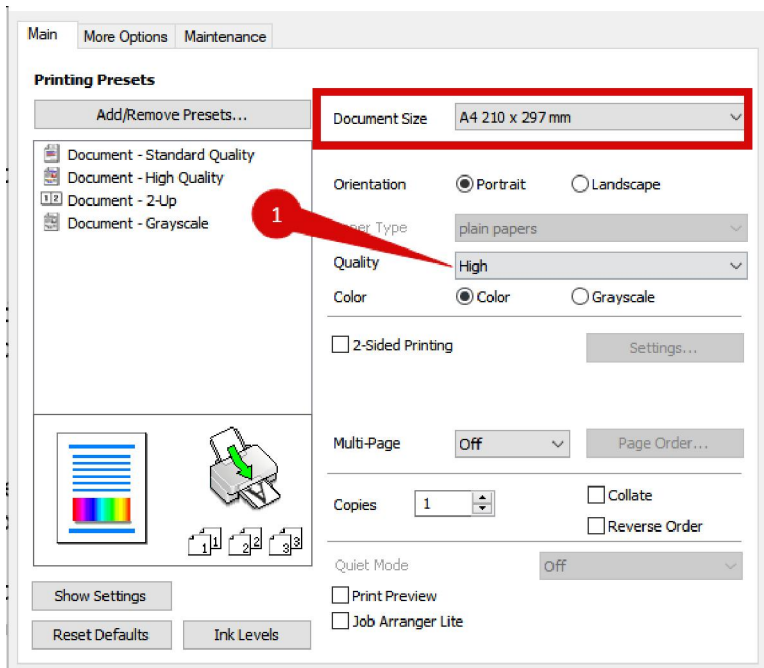
At the end of printing, the table will move forward completely, a beep will sound and the Status indicator will go out.

## Computer settings

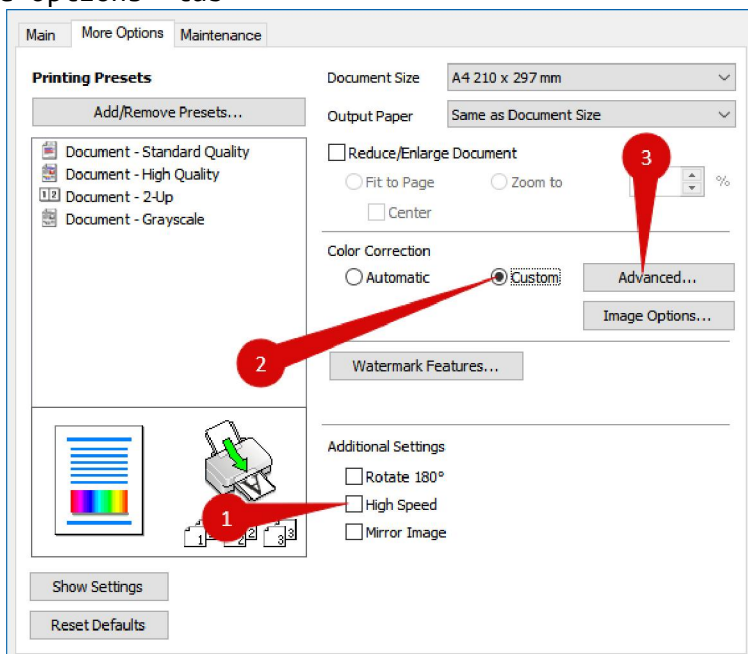
In order to use the device for printing, you must have a computer and the device's driver installed on it.

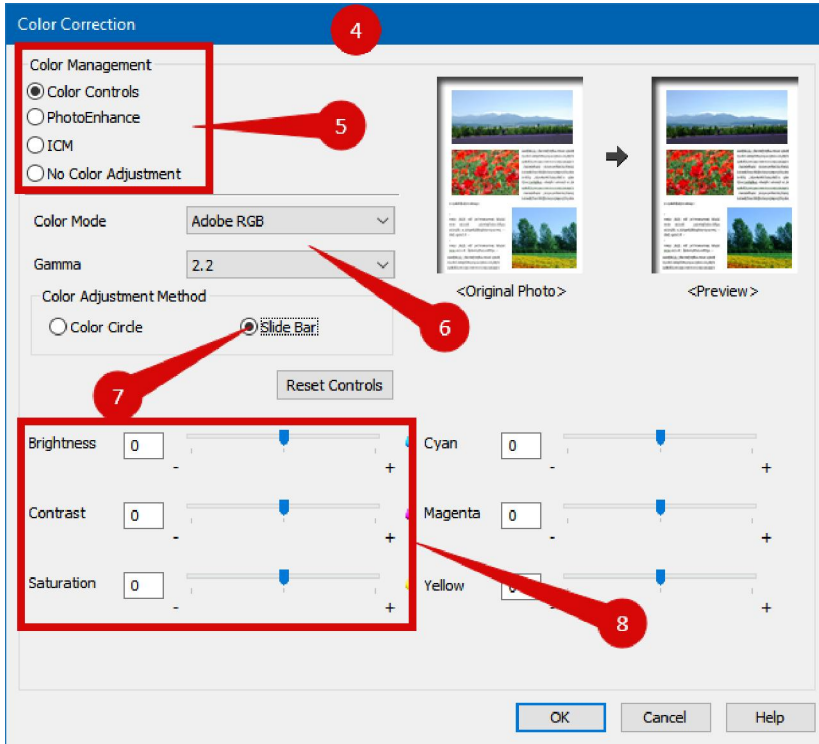
Before connecting the printer to the computer, you need to download the drivers from the official Epson website: [epson.eu](http://epson.eu). On the site, you will need to select the region and go to the Support section in the top menu. Next, find the Epson L121 printer and go to the product page. Select Drivers and download. Then start the installation procedure. The installer will then ask you to connect the printer to your computer. At this point, you will need to connect the printer to the computer with a USB cable. After the installation is complete, the driver and printer are ready, but additional settings are required for high-quality printing. To do this, go to the driver settings:

1. Press Win+R
2. Enter "control printers"
3. In the window that opens, find "Epson L120 Series" and click the right mouse button
4. Select "Print Settings"

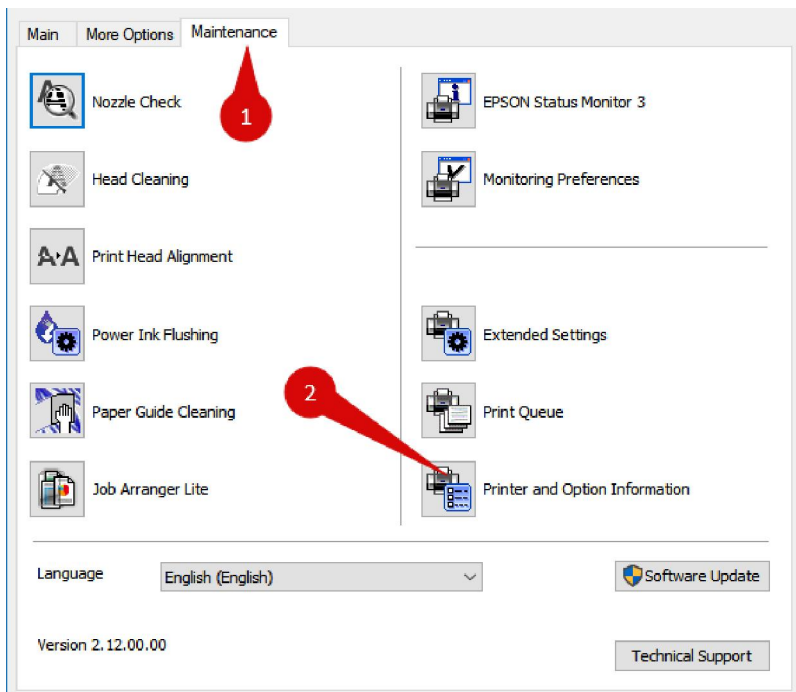


In the window, set "Quality" - "High". Go to the "More Options" tab

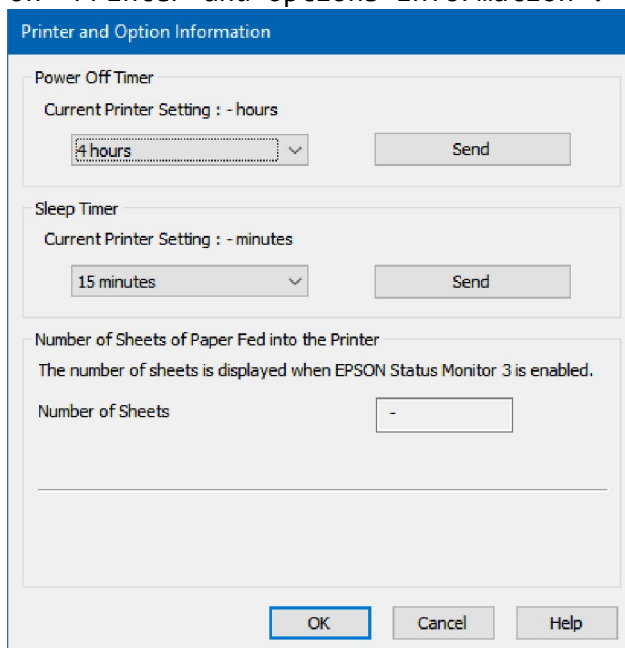




1. Turn off "High Speed"
  2. Switch to "Custom"
  3. Click "Advanced..."
  4. The color correction window will open.
  5. Install the switches as shown
  6. Select color mode
  7. Switch to "Slide bars"
  8. Regulators can slightly correct the image if necessary.
- Go to the "Maintenance" tab.



Click on "Printer and Options Information":



Set Power Off Timer as "4 hours" and click "Send".  
Set "Sleep timer" as "15 minutes" and click "Send".

The windows can then be closed by clicking the OK button.

This completes the driver setup and the device is ready to go.

## **Service**

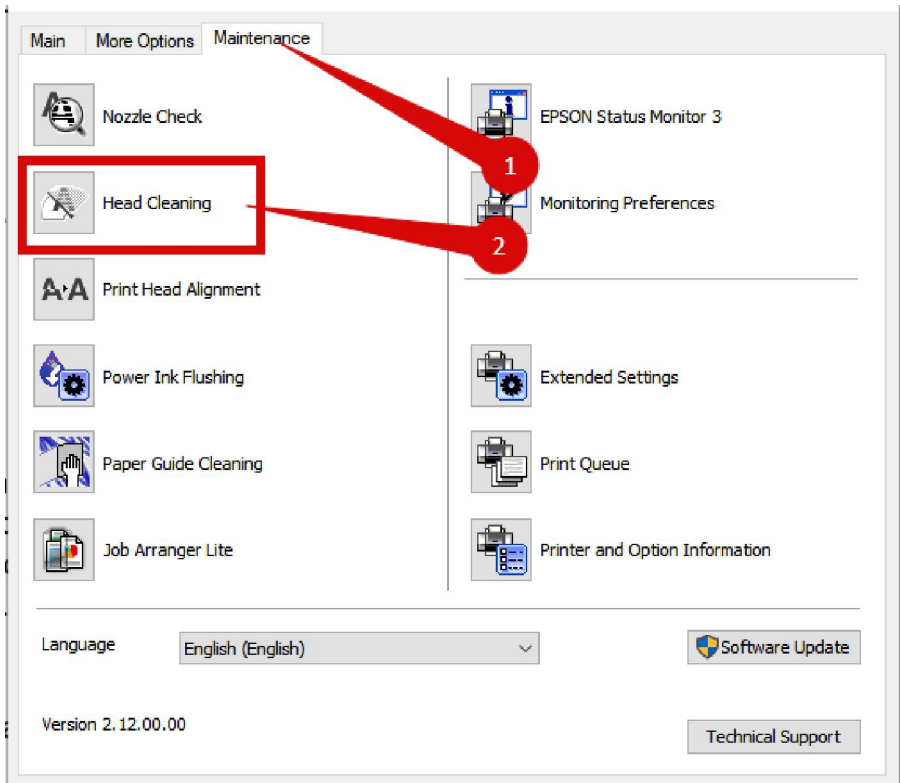
The device does not require any maintenance. You need to monitor the level of waste ink in the tank and if it exceeds half the height, empty the tank.

If the printer is idle, the print head of the printer may dry out. Also, if the device is used for a long time, it may become dirty.

In this case, you need to clean the print head. To do this, when the printer is in a standby state and does not perform any action, you must press the "Clean" button and hold it for 4-5 seconds. This will turn on the pump in manual mode and pump out a small amount of ink. Do not use this function frequently to avoid wasting inks.

After cleaning, print a small image and check that the printed image is in good quality. If distortion or gaps are present, then through the device driver on the "Service" tab, click "Head Cleaning".

After cleaning, the driver prompts you to print a nozzle test. Lay out a blank A4 white sheet and print a sample. Follow the driver's instructions.



If you need to replace the ink, empty the ink bottles first with a syringe. Then press and hold the "Clean" button until no more liquid flows into the waste ink bottle. Then refill with new ink and press and hold the "Clean" button again until liquid begins to flow into the container. After that, clean the print head through the driver.